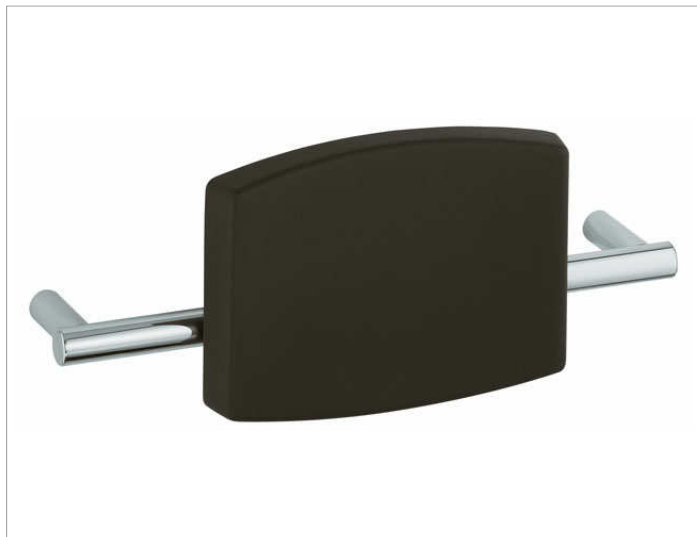


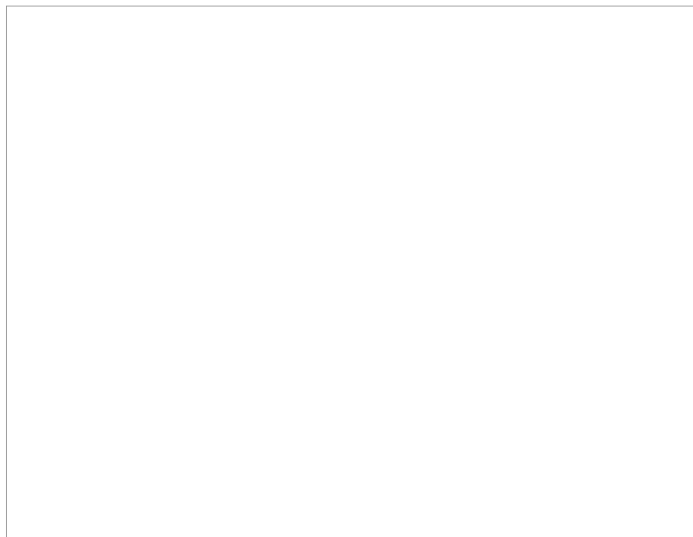
Plan Care

34979000038 Спинка для сиденья

ИЗДЕЛИЕ



ЧЕРТЕЖ



ОПИСАНИЕ ИЗДЕЛИЯ

для навешивания на настенную штангу

поверхность

светло-серый (RAL 7035)

спецификации

KEUCO PLAN CARE back rest 34979000038  
ergonomic back rest made from high quality polyurethane  
to clip into wall-mounted bar, cat-no 34979  
the dark-grey (RAL 7035) back support is 250 mm high, 350 mm wide  
projection including wall-mounted bar 168 mm  
the bar is discretely wall-mounted with the provided anti-corrosion  
mounting set

the wall-mounted bar has to be ordered separately!