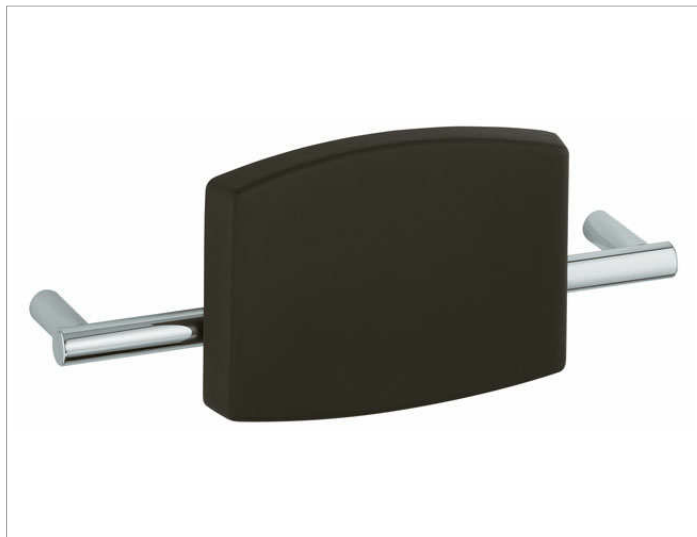


Plan Care

34979000051 Спинка для сиденья

ИЗДЕЛИЕ



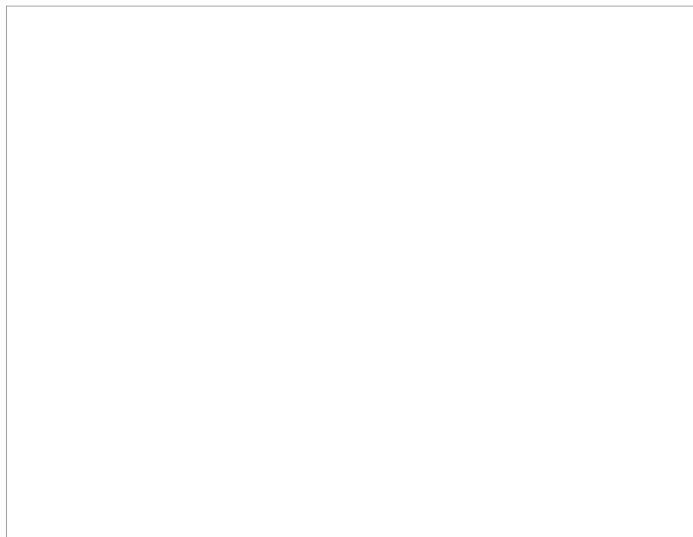
ОПИСАНИЕ ИЗДЕЛИЯ

для навешивания на настенную штангу

поверхность

белый (RAL 9010)

ЧЕРТЕЖ



спецификации

KEUCO PLAN CARE back rest 34979000051
ergonomic back rest made from high quality polyurethane
to clip into wall-mounted bar, cat-no 34979
the white (RAL 9010) back support is 250 mm high, 350 mm wide
projection including wall-mounted bar 168 mm
the bar is discretely wall-mounted with the provided anti-corrosion
mounting set

the wall-mounted bar has to be ordered separately!