



**BOSSINI**  
HIGH QUALITY SHOWER SYSTEMS

**SCHEDA TECNICA - TECHNICAL SHEET**

07/12/2023

Rev: 0

**Codice - Code:**

**INZ221**

Stainless steel exposed parts for wall-mounting thermostatic coaxial mixer

**Descrizione - Description:**

Parti esterne AISI316L per miscelatore temostatico coassiale da incasso a parete

*External parts AISI316L for wall-mounting thermostatic coaxial mixer*

*Aufputz Teil AISI316L für Thermostat Wandeinbau Mischer*

*Parties externes AISI316L pour mitigeur thermostatique coaxial mural*

*Partes externas AISI316L para mezclador termostático coaxial de pared*

*Наружная часть AISI316L Смеситель термостатического встраиваемый встраиваемого настенного смесителя*

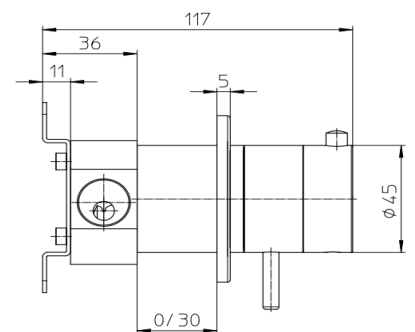
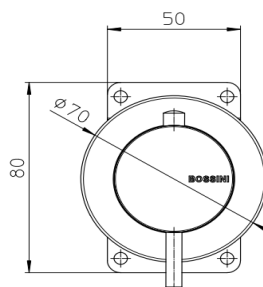
**Tecnologia - Technology:**



**Immagine Prodotto - Product Image**



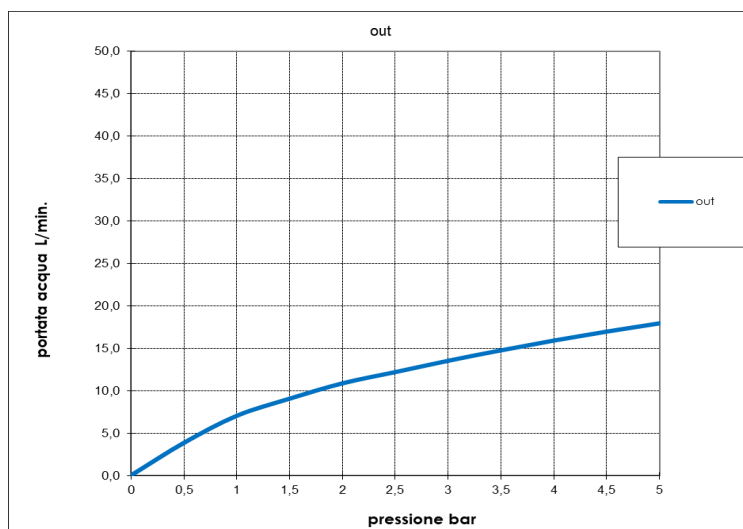
**Disegni - Drawings**



Concealed part (INZ220) supplied separately

Grafico di portata - Flow rate diagram

	out
0	0,0
0,5	3,8
1	7,0
1,5	9,1
2	10,9
2,5	12,2
3	13,5
3,5	14,8
4	15,9
4,5	17,0
5	17,9
pressione <b>bar</b>	portata <b>L/min</b>



Le portate indicate sono valide solo in abbinamento all'incasso INZ220, acqua miscelata 50/50 calda e fredda  
 Flow rate mentioned are valid only with the concealed part INZ220, mixed water 50/50 hot and cold

Caratteristiche idrauliche - Hydraulic features

	Pressione Pressure	Portata Flow rate	Solo per miscelatori termostatici Only for thermostatic mixers	
min	1 bar	7 L/min	Blocco di sicurezza Safety lock	38 °C
max	5 bar	17,9 L/min	Temperatura acqua fredda Cold water temperature	≤ 25°C
Portata minima consigliata per buon funzionamento Recommended minimum flow-rate for optimal performance		--	Temperatura acqua calda Hot water temperature	55°C ≤ T ≤ 65°C

Materiali - Materials

**Manopola e rosone:** Acciaio Inox AISI 316L  
**Handle and plate:** Stainless steel AISI 316L

Certificazioni - Certifications

Conformità' - Conformity