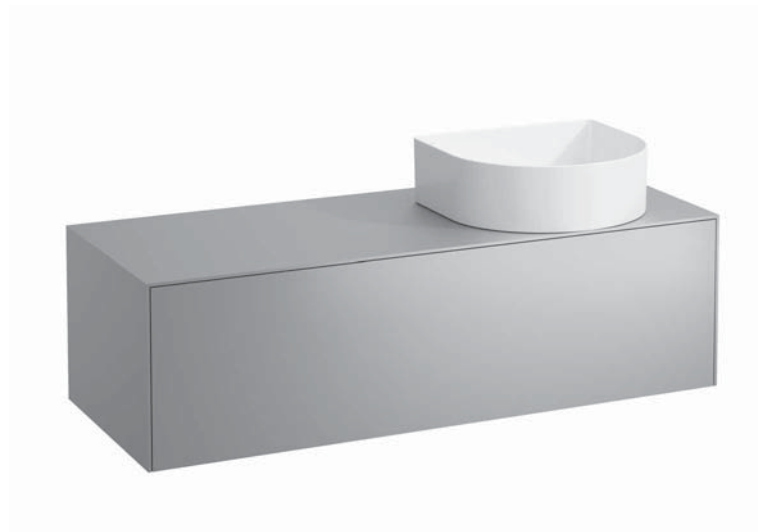


Drawer element with cut out right
40542.3



TECHNICAL DATA

Order no.	40542.3 / 1 drawer	Accessories excl.	Space saving siphon, order no. 89424.0
Dimensions (WxHxD)	1177 x 341 x 457 mm	Mounting acc. incl.	Installation set for furniture, order no. 491114.0, 49301.5
Matching for	Washbasin bowl, order no. 81234.0, 81234.1, 81234.2, 81234.3	Mounting information	The walls installed on must meet the requirements of the furniture in terms of weight and the supplied fastening elements. If this cannot be guaranteed another method of installation needs to be chosen.
Specification	Body/Front – particle board, inside melamine dark grey on the outsides MDF panels 6 mm, lacquered Top – lacquered MDF or ceramic stoneware with marble optic with 6 mm top 1 cut out right 1 push and pull full extension drawer (soft-close mechanism)	Colours	040 – Gold (laquered MDF top) 041 – Copper (laquered MDF top) 042 – Titanium (laquered MDF top) 140 – Gold / Nero marquina (ceramic top) 141 – Copper / Nero marquina (ceramic top) 142 – Titanium / Nero marquina (ceramic top)
Weight	with MDF top – 39,5 kg with ceramic top – 45,5 kg		

TECHNICAL DRAWINGS / S 1 : 20

