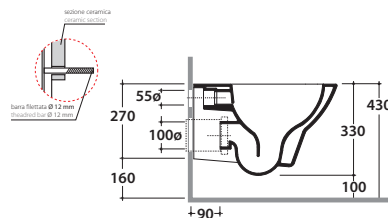
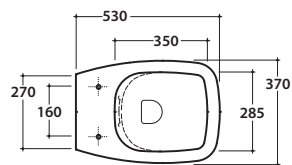


DAILY WALL-HUNG WC NO RIM DAS03BI

CE EN 997:2015

GLOBO



Ceramic antibacterial effect
BATAFORM®



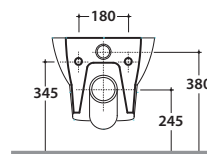
Drain 4/2,6 lt



Glazed product with
CERASLIDE®

Cod. **DAS03BI**

Wall-hung Wc 53.37 h33 cm No Rim. Drain 4 / 2,6 Lt. Fixing kit included. Weight 21 Kg



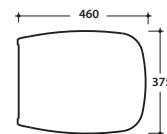
Seat-cover with hinge system
to quick release



Antibacterial treatment on toilet seats
in shiny white

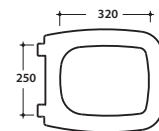
Cod. **DAR19BI**

Removable duroplast seat-cover with traditional closing system. Weight 3 Kg



Cod. **DAR20BI**

Removable duroplast seat-cover with soft-closing system. Weight 3 Kg



Cod. **VA132**

Flow reducer.



Cod. **PU001**

Acoustic and crash protection.



Cod. **FI002**

Fixing brackets for W/H sanitary. Weight 2,5 Kg

water label		
Average flushing volume (litres)		
Max. 3.5		3,38
Max. 4.5		
Max. 5.5		
Max. 6		
> 6		

www.europeanwaterlabel.eu