



BATHTUB INSTALLATION GUIDE



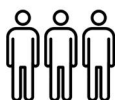
Tools needed



Steel tape measure



Glue gun



About 3 men

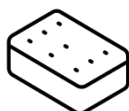


Triangle timber x4

Cleaning



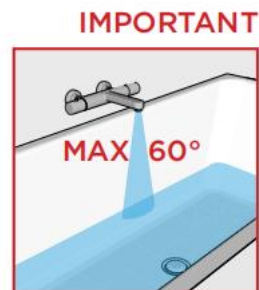
40°C H2O



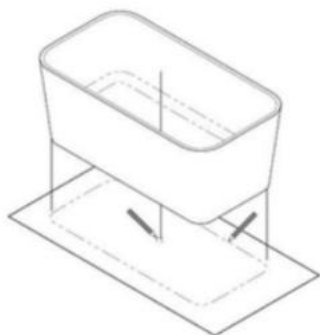
Sponge



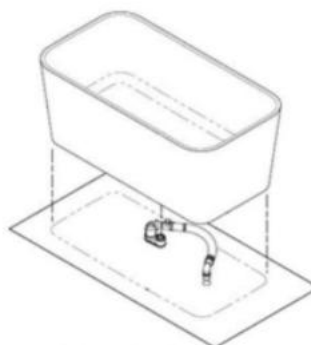
Soap



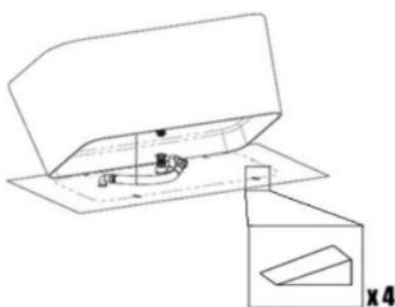
BATHTUB INSTALLATION INSTRUCTION



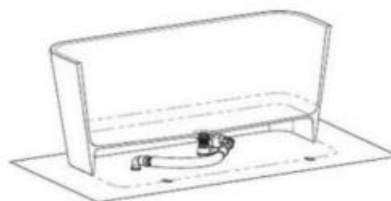
1. Fix the site of bath and drainer hole on the floor by pen.



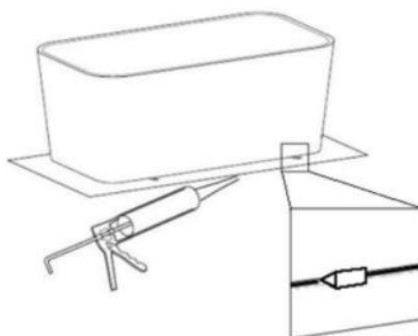
2. Installate the drain system on the floor.



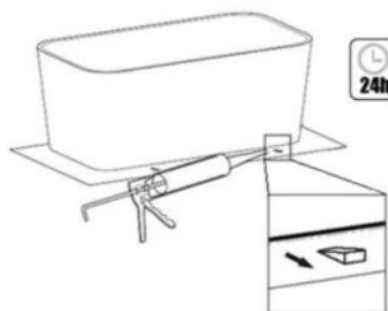
3. Put the bath on the correct place and add 4 pcs of triangle timber under the bath.



4. Connect the drainer system.



5. Glue the gap between bath and floor.



6. Take out the triangle timber 24 hours later after the work of glue.